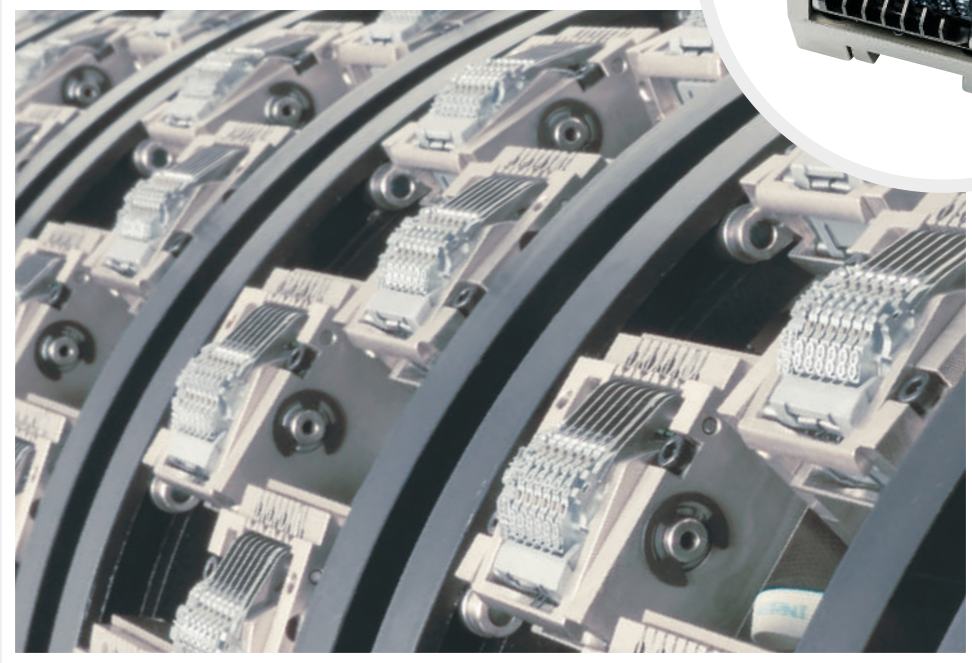


LEIBINGER



HIGH PRECISION NUMBERING

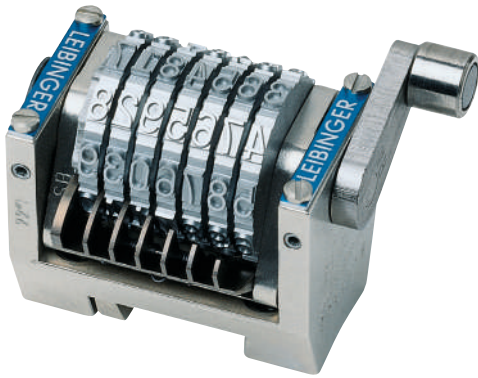
The original since 1948.

ROTARY

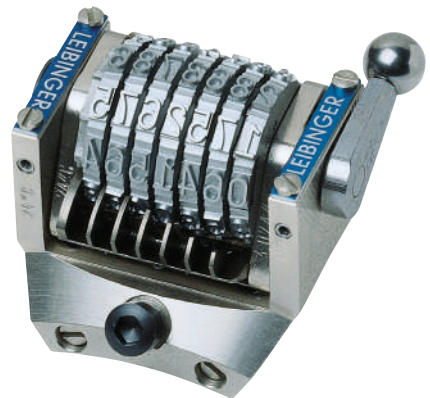
Numbering Machines

Rotary Numbering Machines

Straight or convex, 7 or 9 digits in engravings 3/16" Gothic, 1/4" Gothic, Farrington 7B, engravings 115, 116, etc.



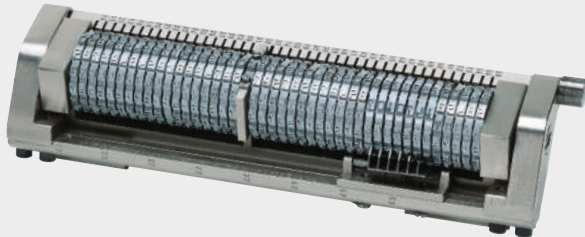
0123456



0123456

Rotary numbering machines for encoding

E.g. numbering of cheques from 7 to 43 digits with the MICR engravings E13B and CMC-7 as well as the OCR engraving OCR-A1, A3 and A4 and OCR-B1, B3 and B4.



Numbering of lottery tickets

Special engravings with lateral font, below or inside.

Barcode numbering machines

In all requested designs, e.g. for documents of DHL, Federal Express, EMS, ATB-1, etc.

Special designs

With special sequences, skipping, repeating, with pre-inking device, with lockout feature for the non-automatic wheels, front gib locking system, modulus systems weighted and non-weighted, etc.

Accessories



Cams

- » solid
- » split
- » with window
- » with segment and pneumatic cylinder



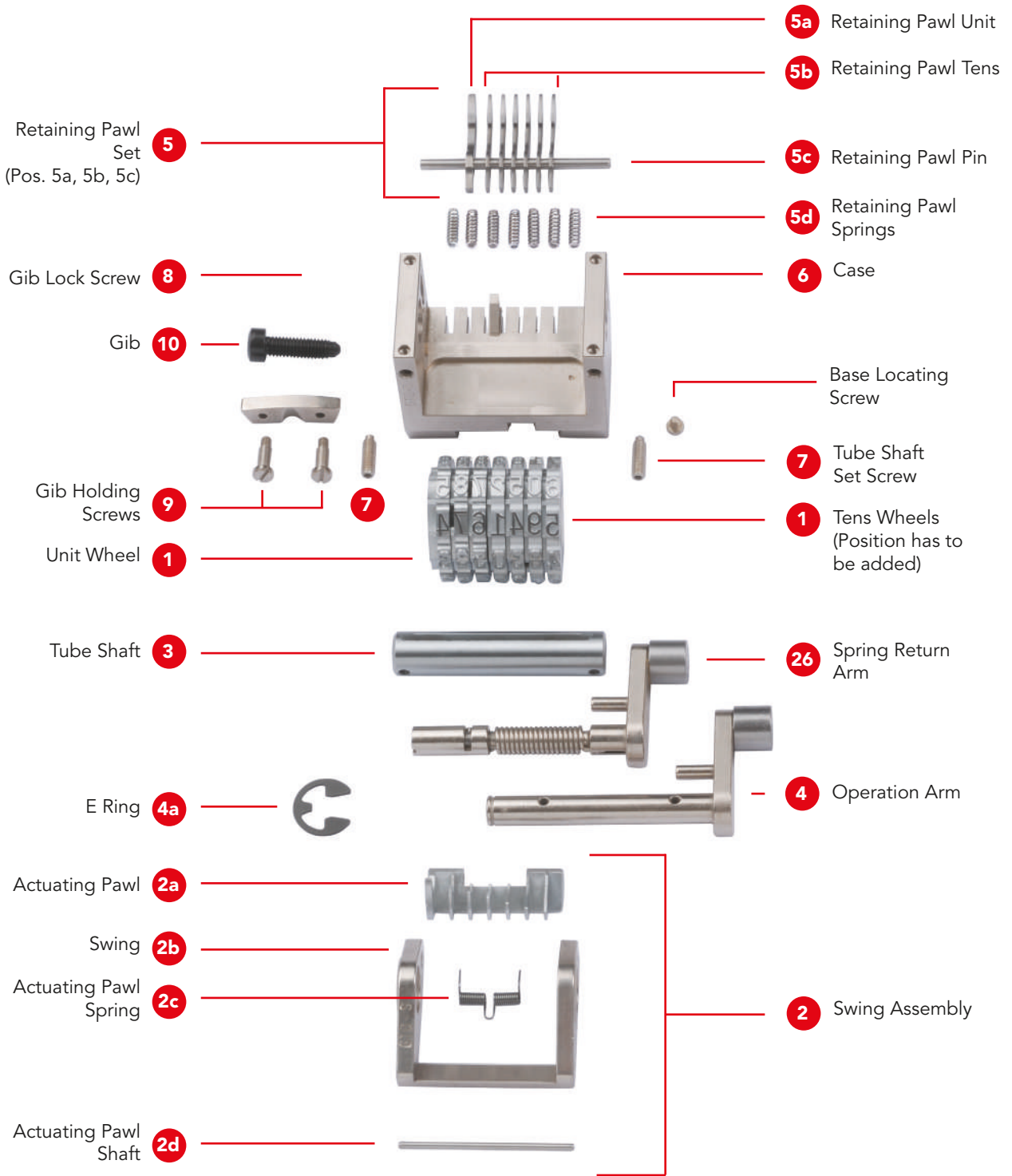
Mounting ring split



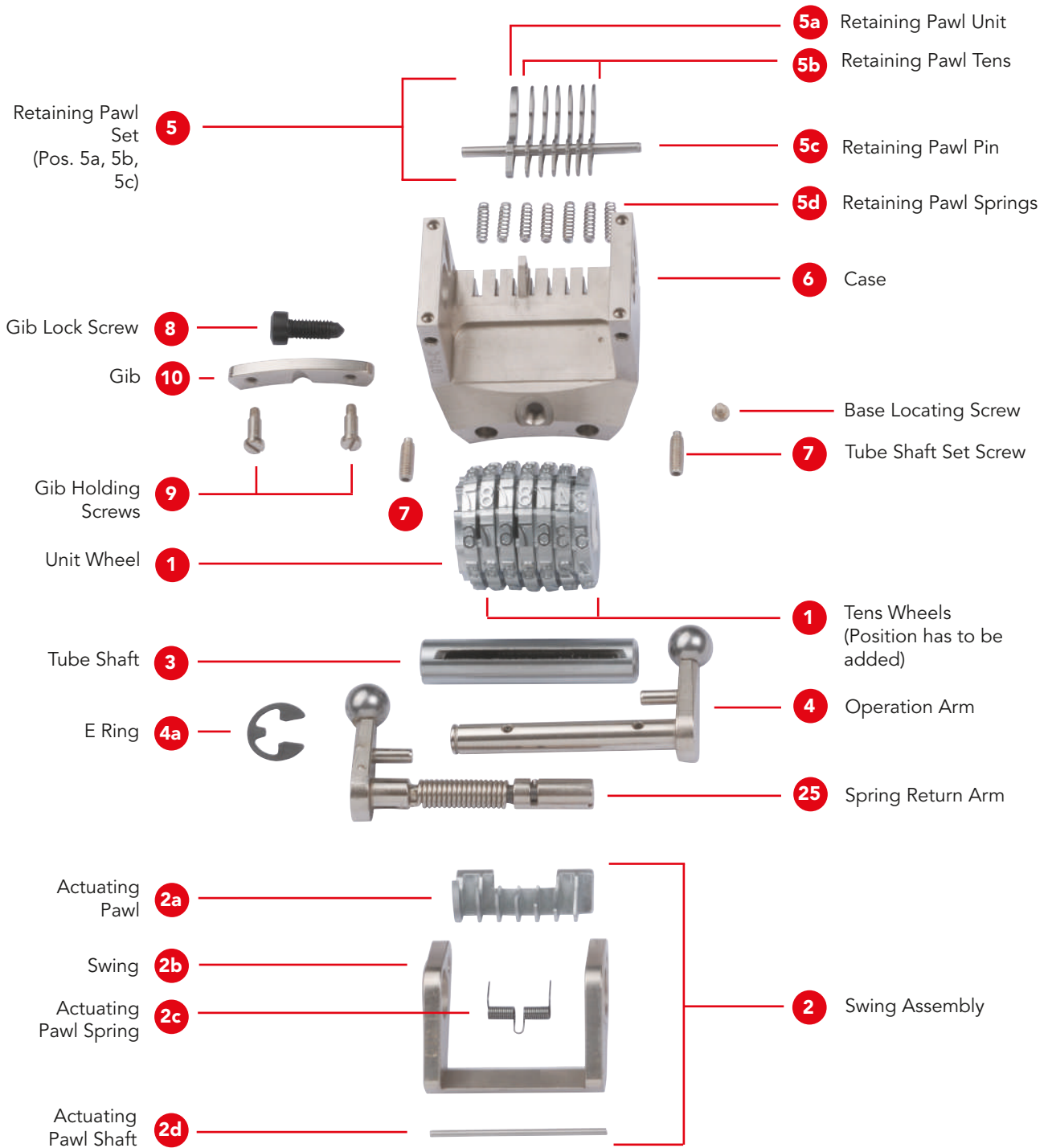
LEIBINGER Service Toolkit

For all service, maintenance, and mounting procedure of LEIBINGER precision-rotary-numbering machines.

Spare parts straight numbering machine



Spare parts convex numbering machine



Errors and changes reserved.
All logos and brands used are registered trademarks or brands of the manufacturer.

Paul Leibinger GmbH & Co. KG
Daimlerstr. 14 | D-78532 Tuttlingen
Tel. +49 (0)7461 9286-0
Fax +49 (0)7461 9286-199

www.leibinger-group.com
info@leibinger-group.com

